



Please find below fitting instructions for the **LC200** series of vehicles.

Before starting, ensure you have all the tools required to complete the installation.

- Wire Strippers
- Crimps to suit insulated terminal
- Wire Cutters
- Spanner/Shifter to suit your Battery terminals
- 10mm Socket to remove factory intercooler cover
- 4mm Allen Key
- Ruler
- Pen
- Grinder/Saw

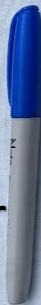
Grinder/Saw



Ruler



Marker



Spanner/Shifter



4mm Allen Key



10mm Socket



Crimps



Wire Cutters



Wire Strippers



# Fitting Pack





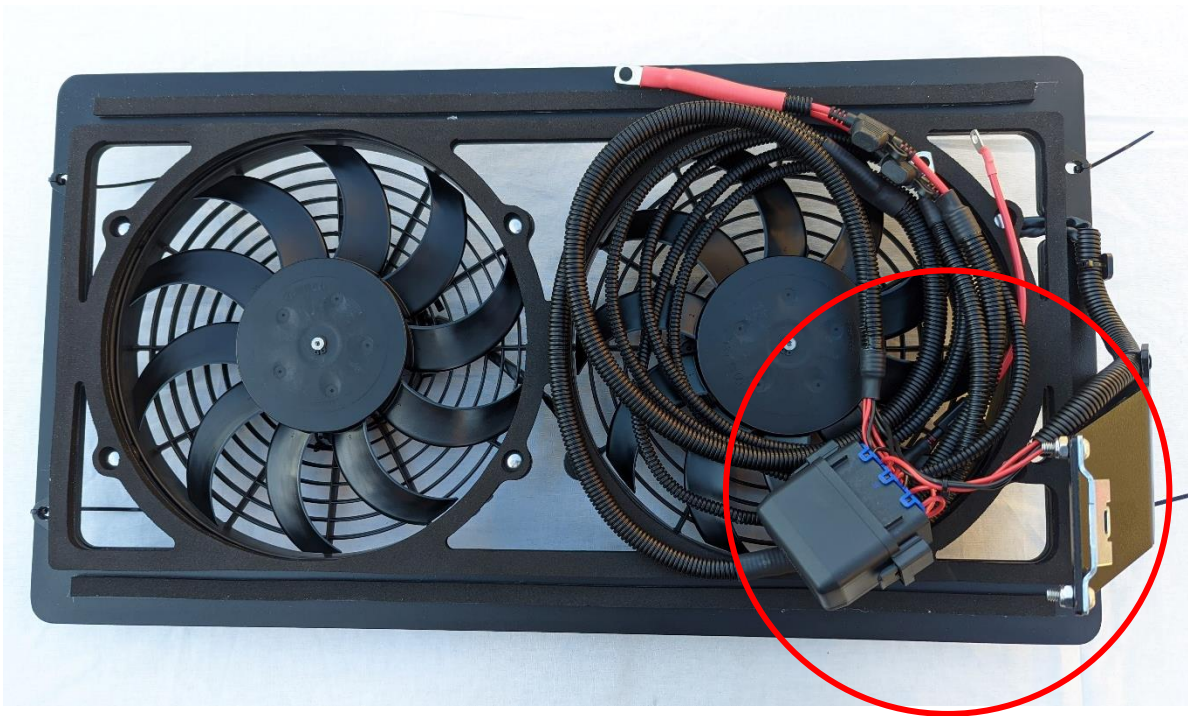
# Fan Bolts, Washers & Spacers



Signal Wire adaptor **200 Series**



When pulling the kit out of the box, the relay holder isn't attached. You need to attach it before fitting the fan kit to the vehicle.

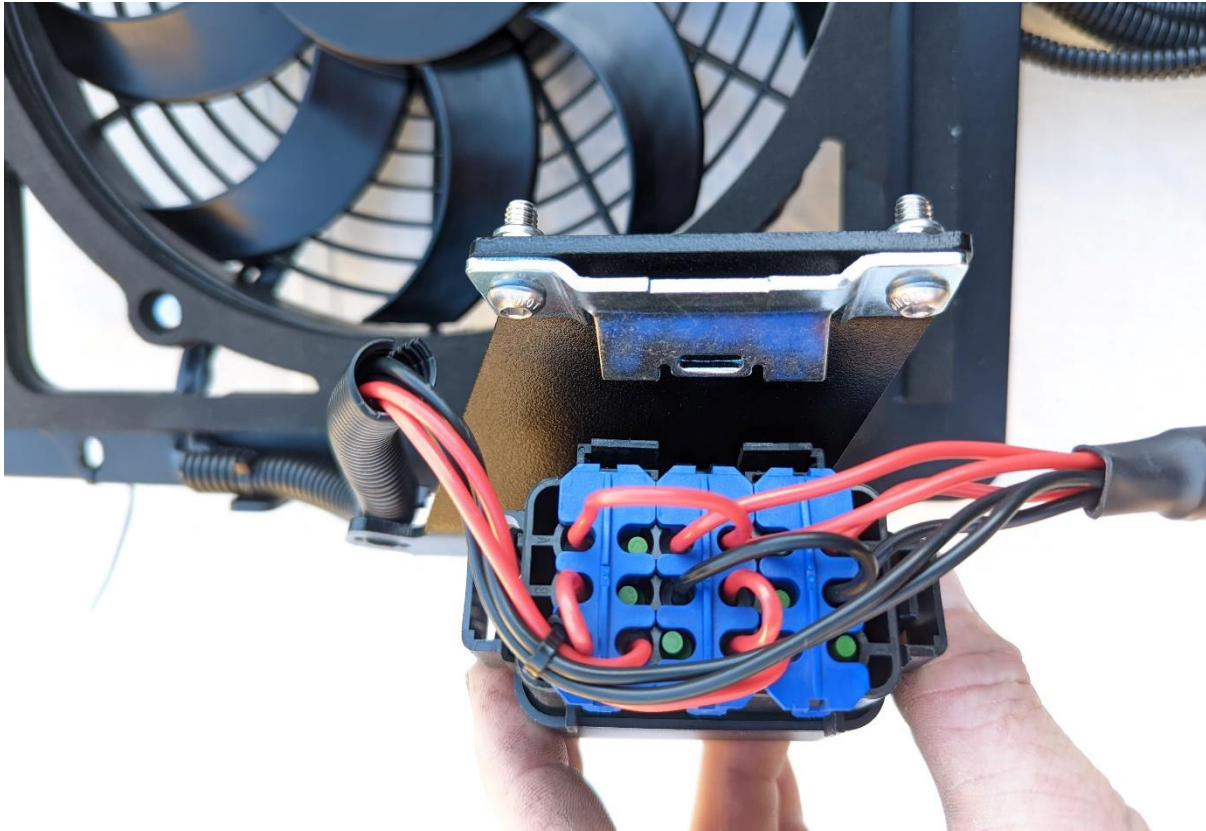


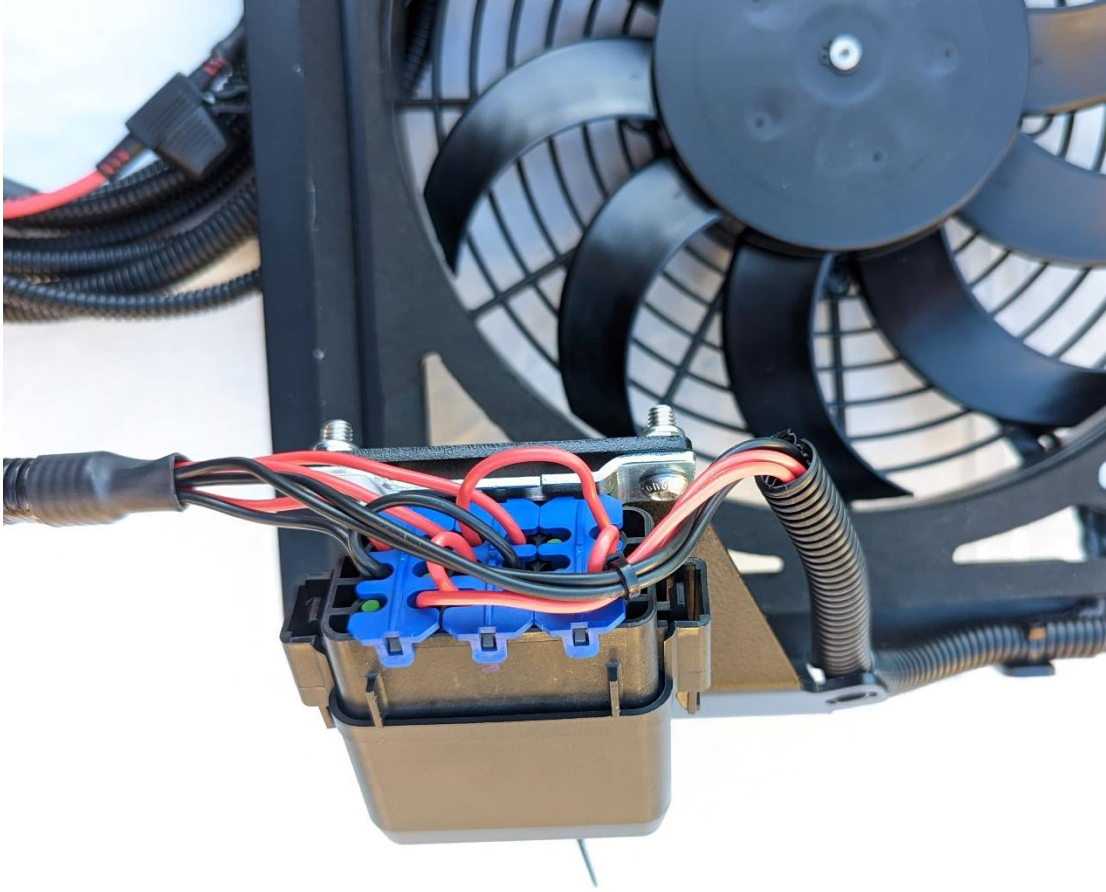
Take care to not overly twist the wiring loom when fitting the relay holder onto its mount.

Wiggle the relay box onto the mount as seen in the photos. You should hear a slight click sound when it's fully engaged onto the mount.

Give the relay box a little pull, **by the lid only** to make sure it has been engaged onto the mount correctly.

**(DO NOT PULL ON THE WIRES)**







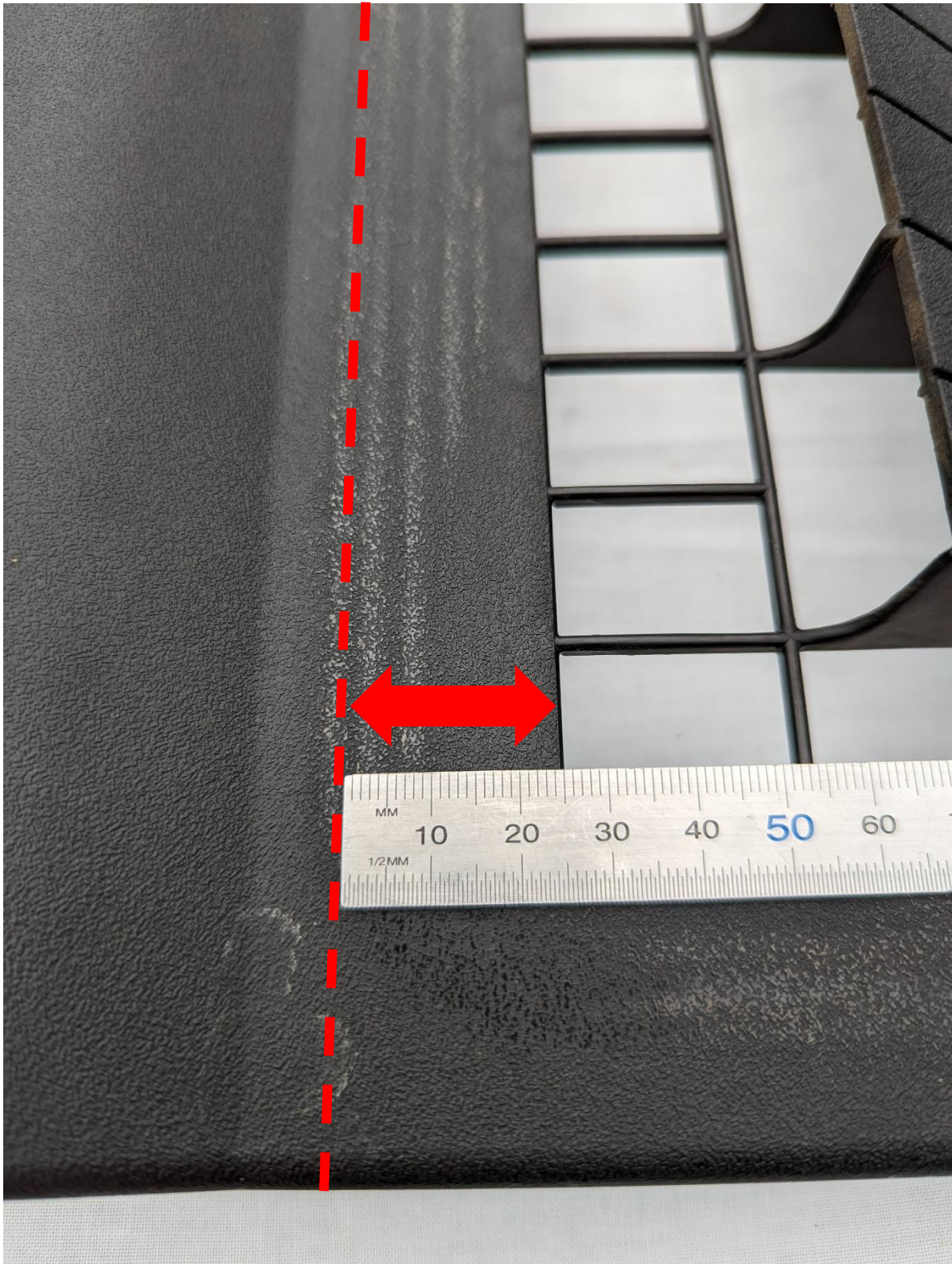


Next you will need to remove the factory intercooler shroud.  
Use the 10mm Socket to undo the 2 nuts.  
Place the shroud & Nuts aside.  
(Circles indicate nuts to be removed)





Using your ruler & marker draw a line the whole width of the engine cover 25mm/2.5cm/1" from inner vent holes.





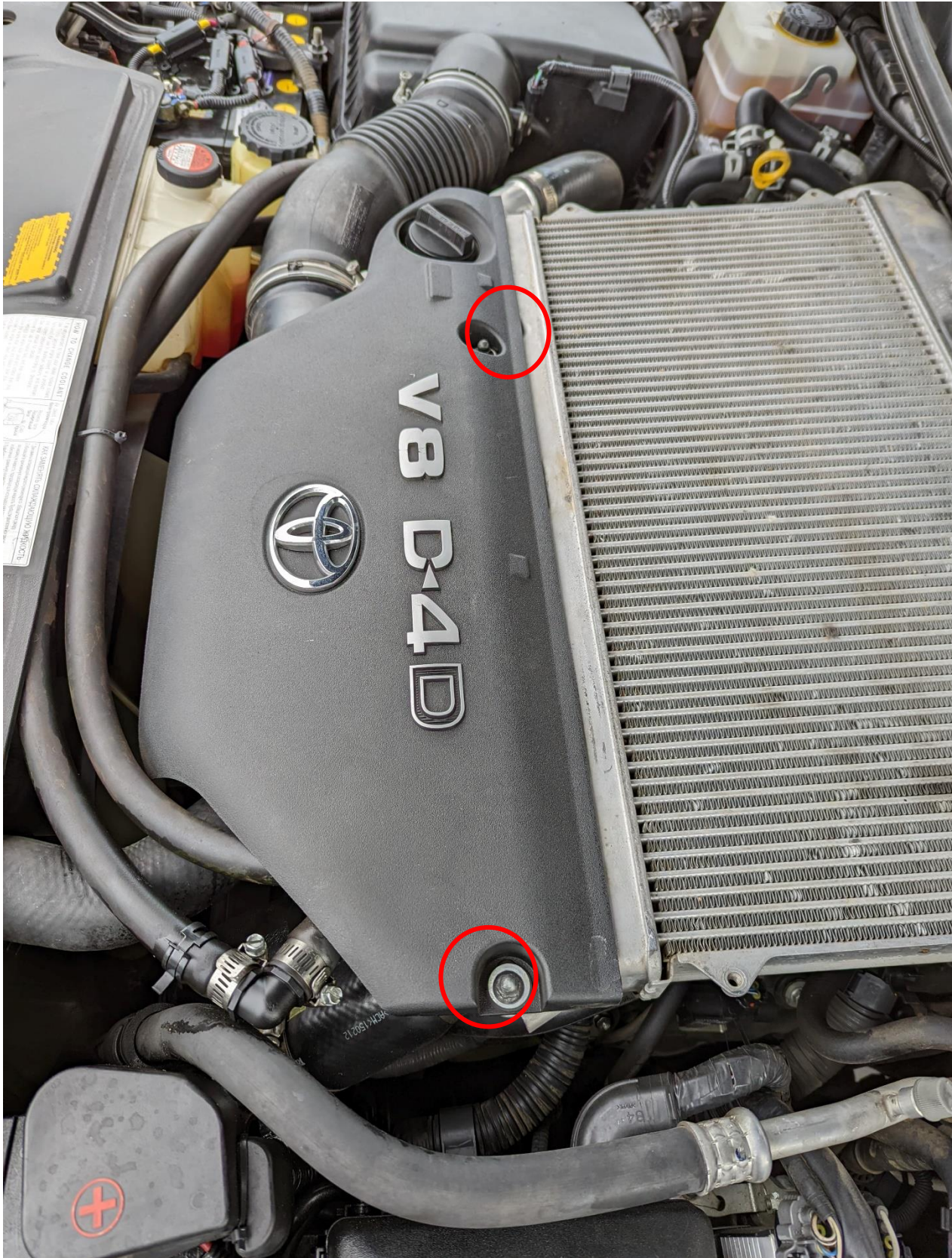
Cut along entire length of the line with your preferred cutting tool. (Caution using a grinder, use your PPE. Gloves, Glasses, Hearing protection).

After cutting remove any rough edges or leftover plastic.

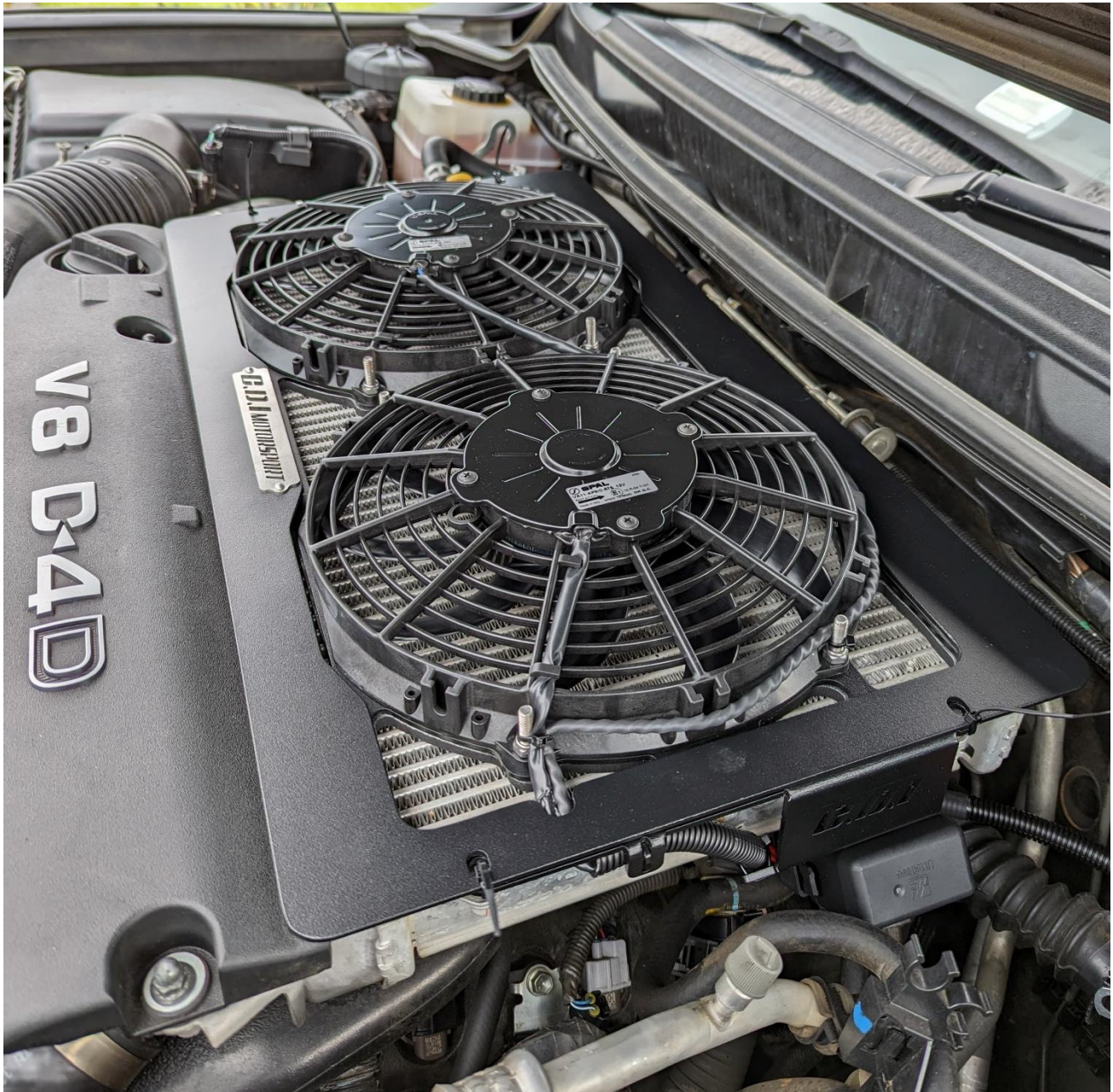




Refit the front section of engine cover as pictured, tightening bolts up.



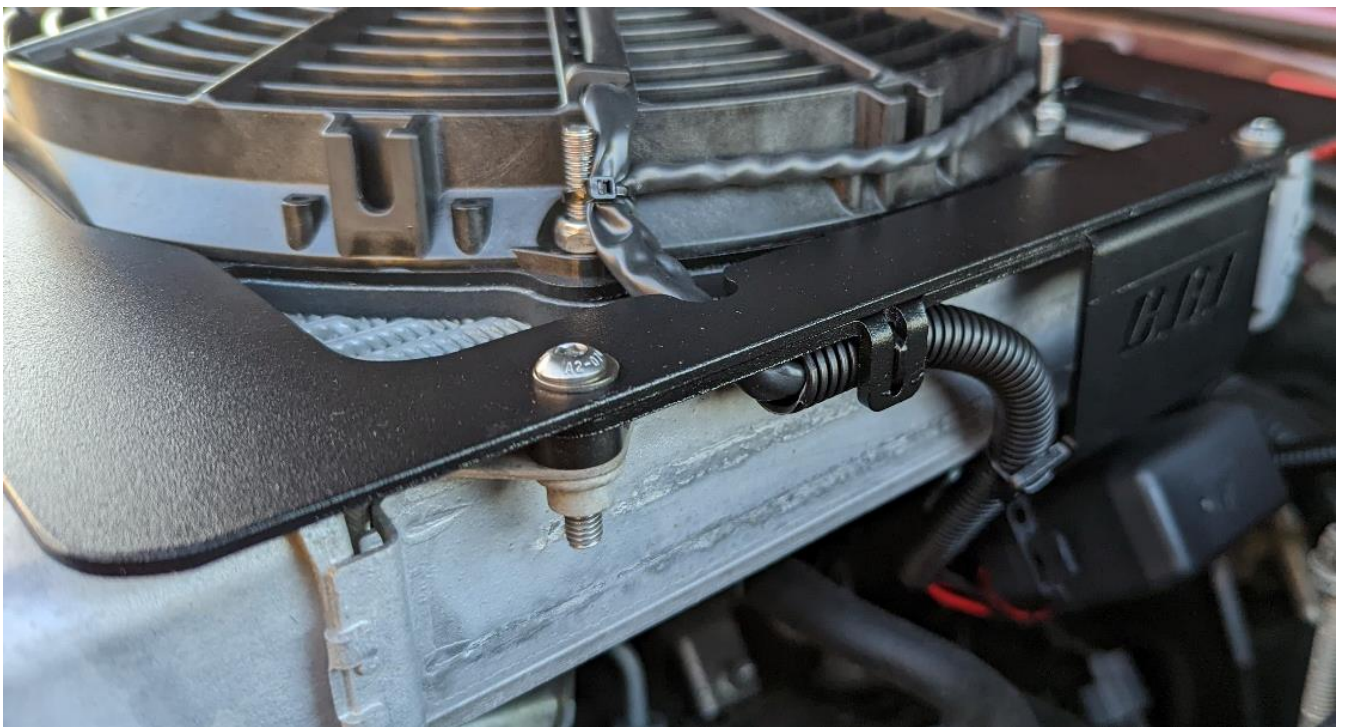
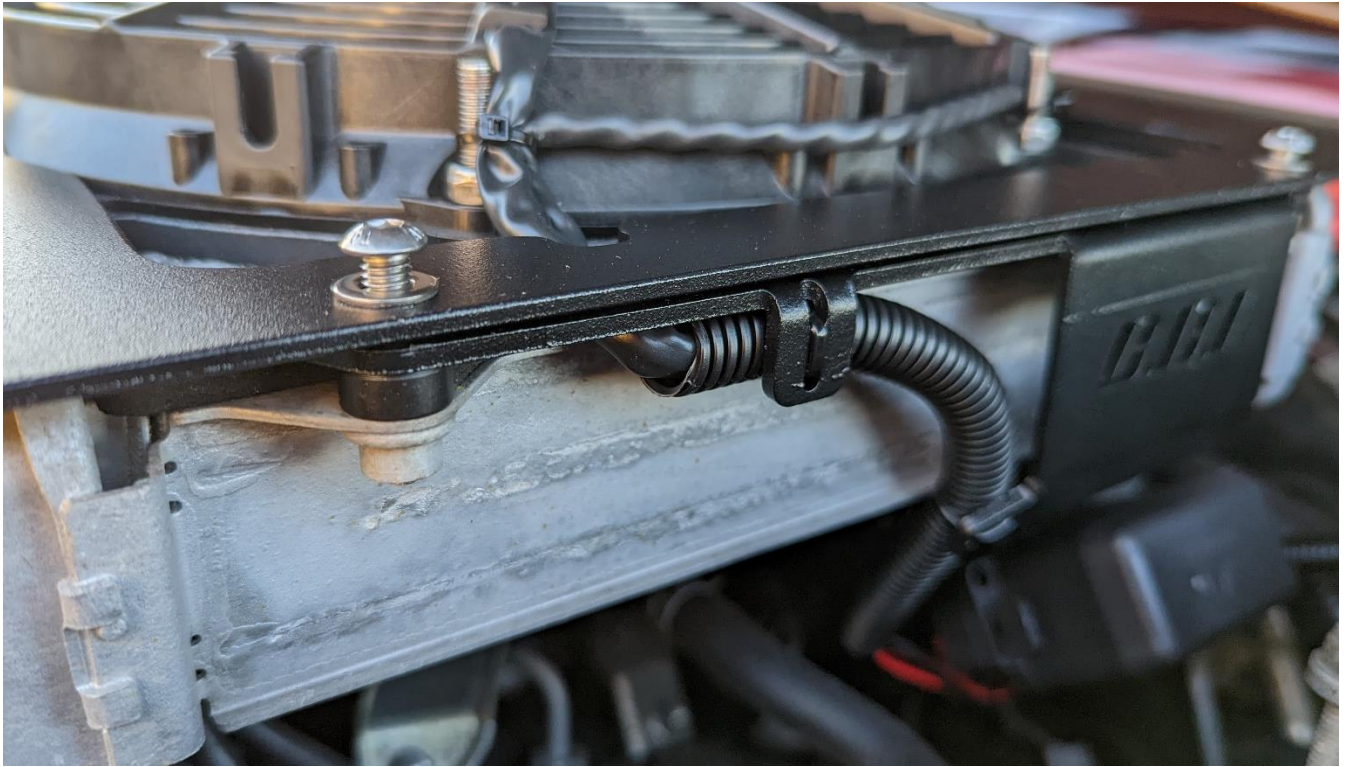




Place the Fan Kit on the intercooler, Using the wire cutters remove the 4 cable ties.



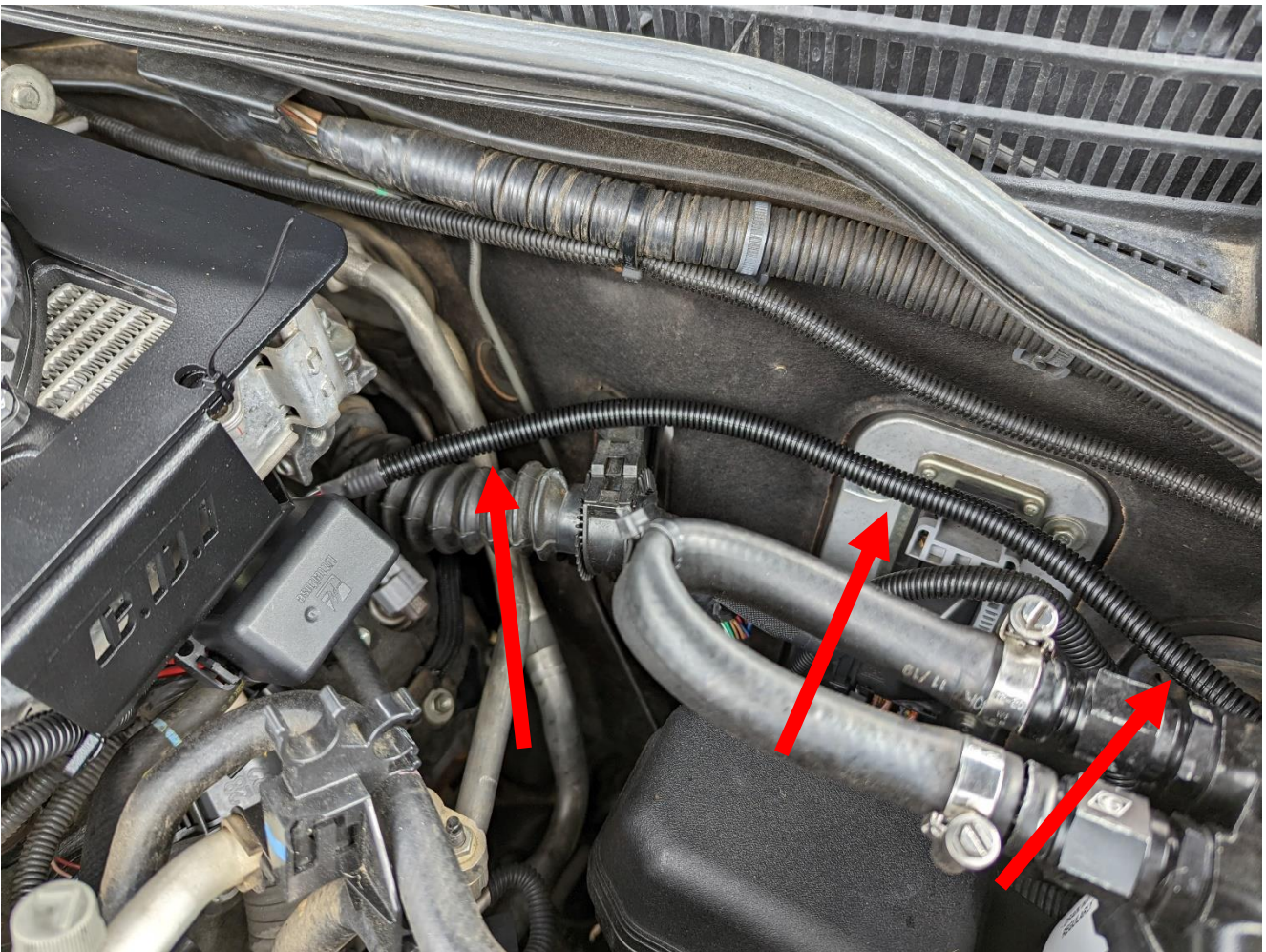
Place the bolt, washer & spacer as indicated into all 4 corners.  
Use the 4mm Allen key to screw the bolts in place. Don't do the bolts up tight until all 4 are in.

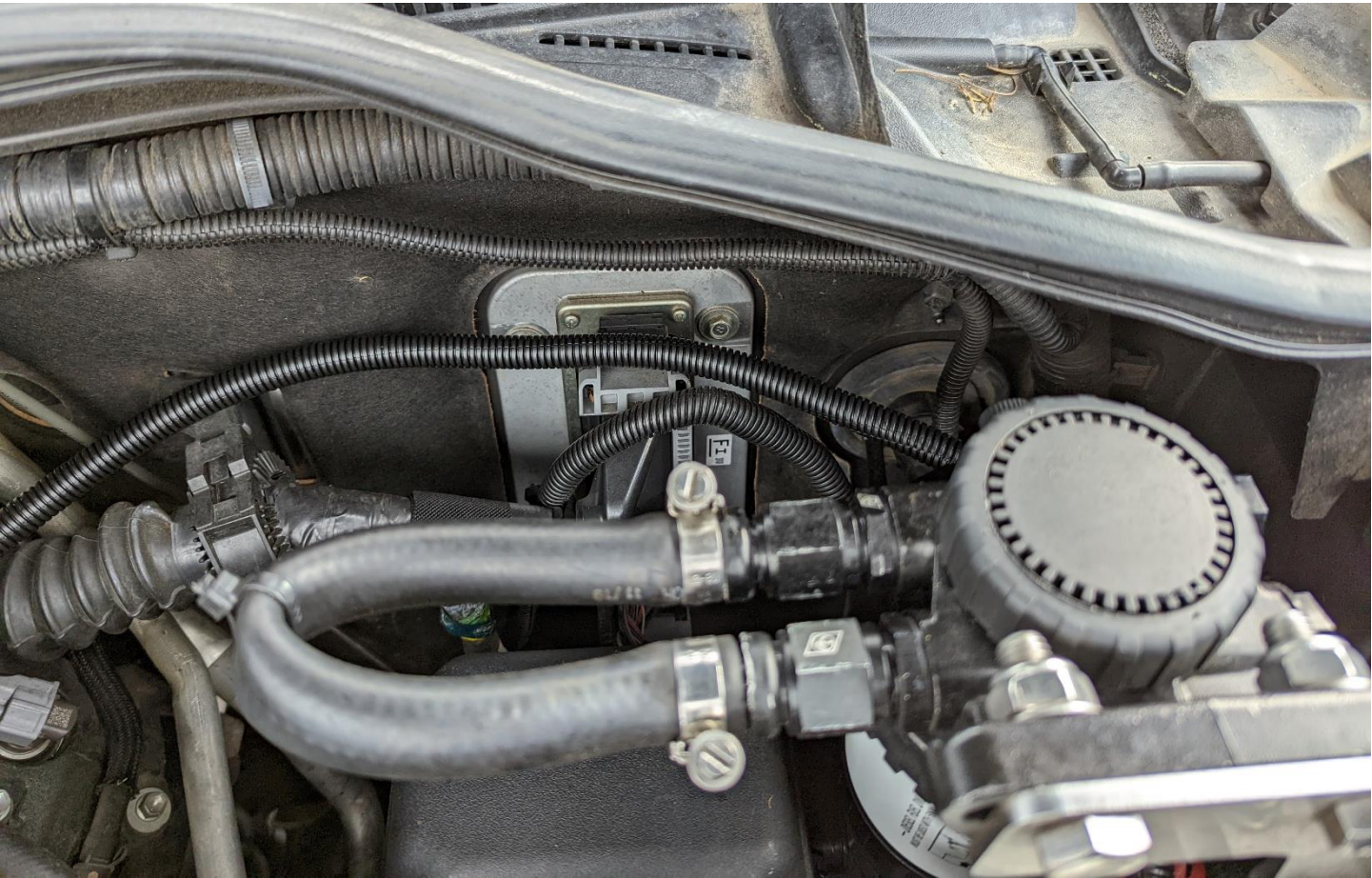




Route the wiring loom back to the firewall then down the side of the inner guard.

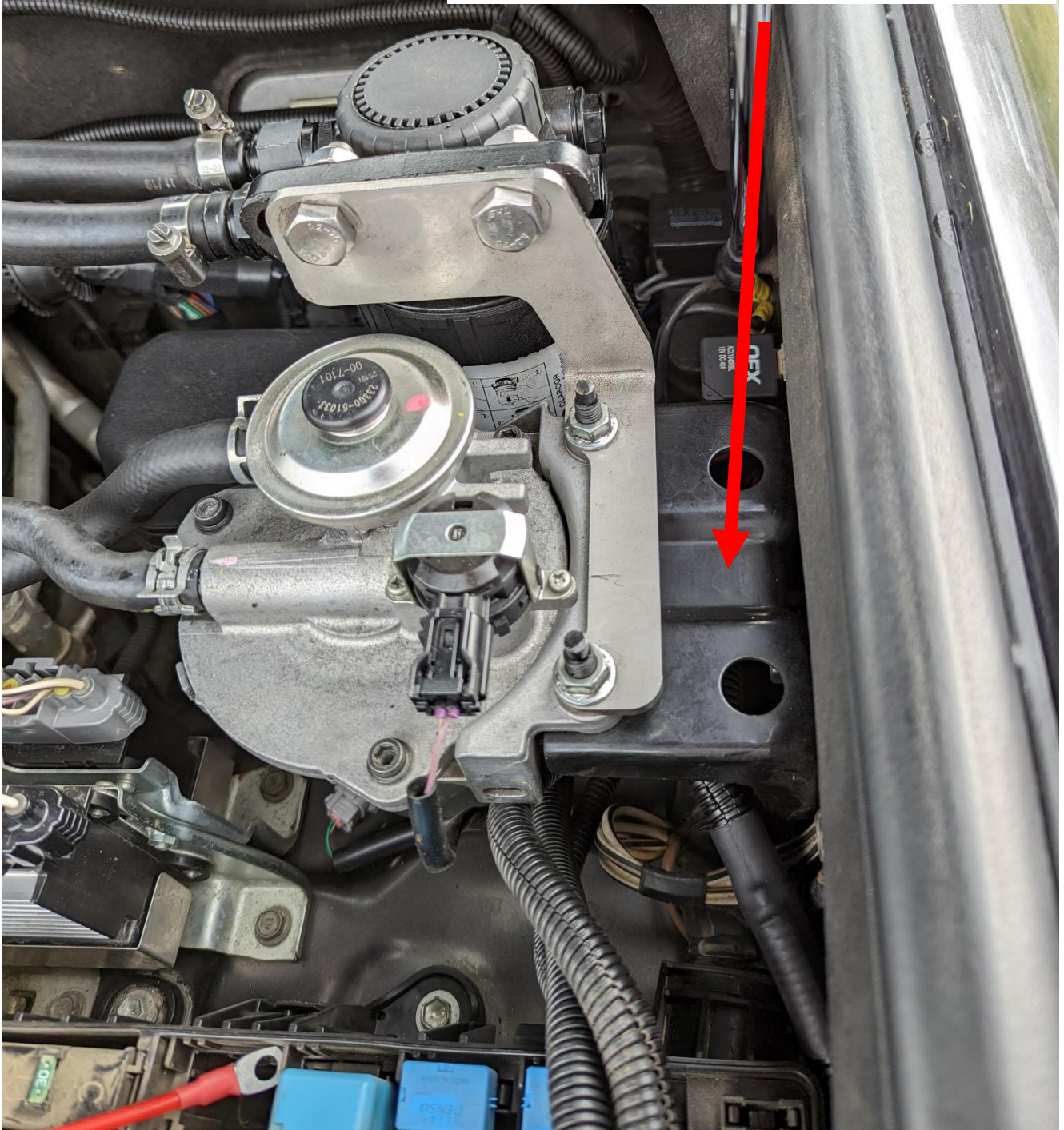
The accessories you may have installed on your vehicle will dictate the exact routing of the wiring loom.



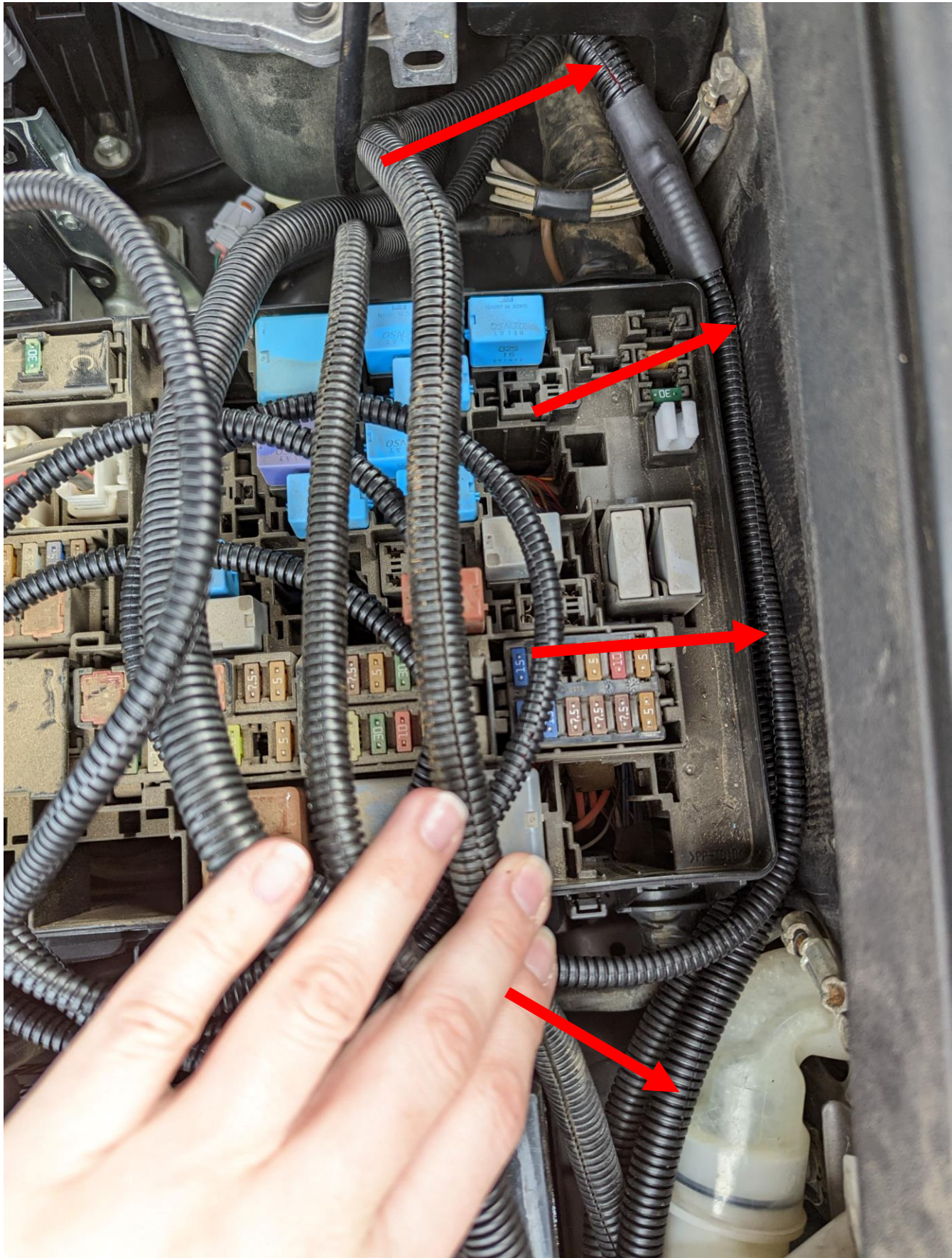




Run Wiring Loom  
Underneath the fuel filter  
mount





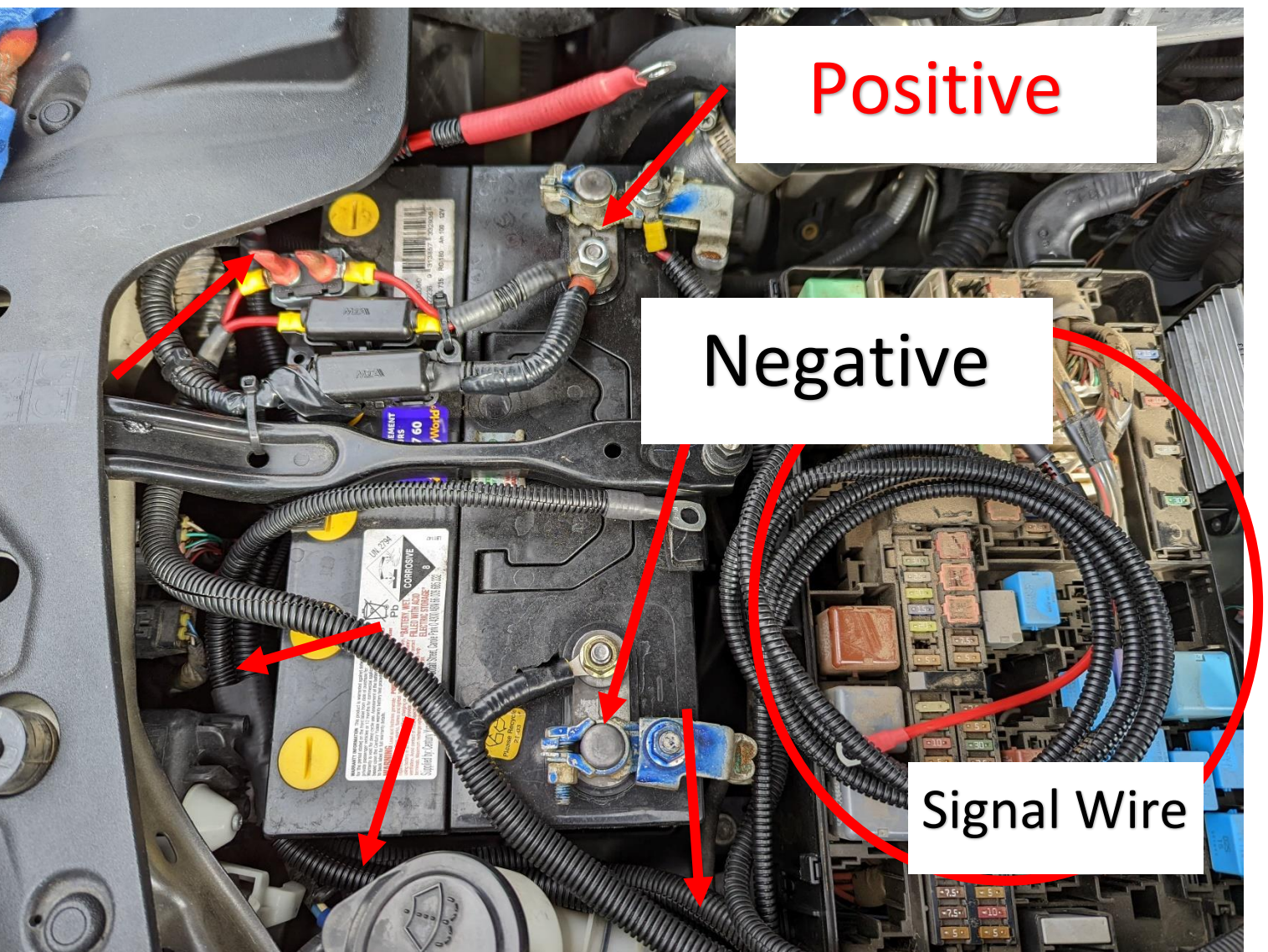


Run the loom along the inner guard & Fuse Box, tuck down under the top edge.



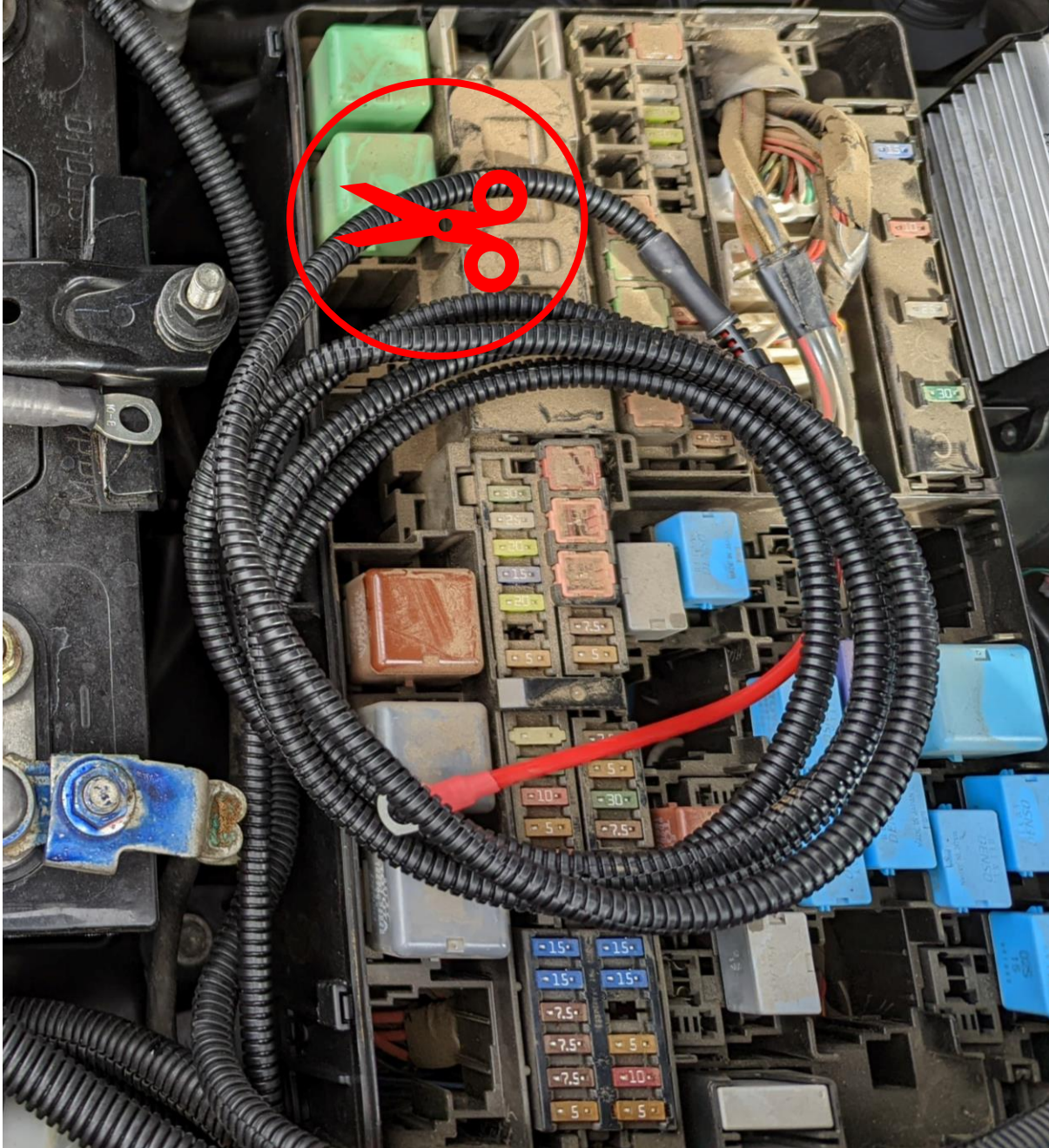
Rout the wiring loom past the Fuse Box & around the battery. Running the Negative & Positive terminals to their respective destinations.

The accessories or previous wiring that may have been fitted to your vehicle will decide the final routing of the wiring loom.





Signal Wire: Using your wire cutters cut the fuse holder off the end. That part is only used for VDJ70 series vehicles.



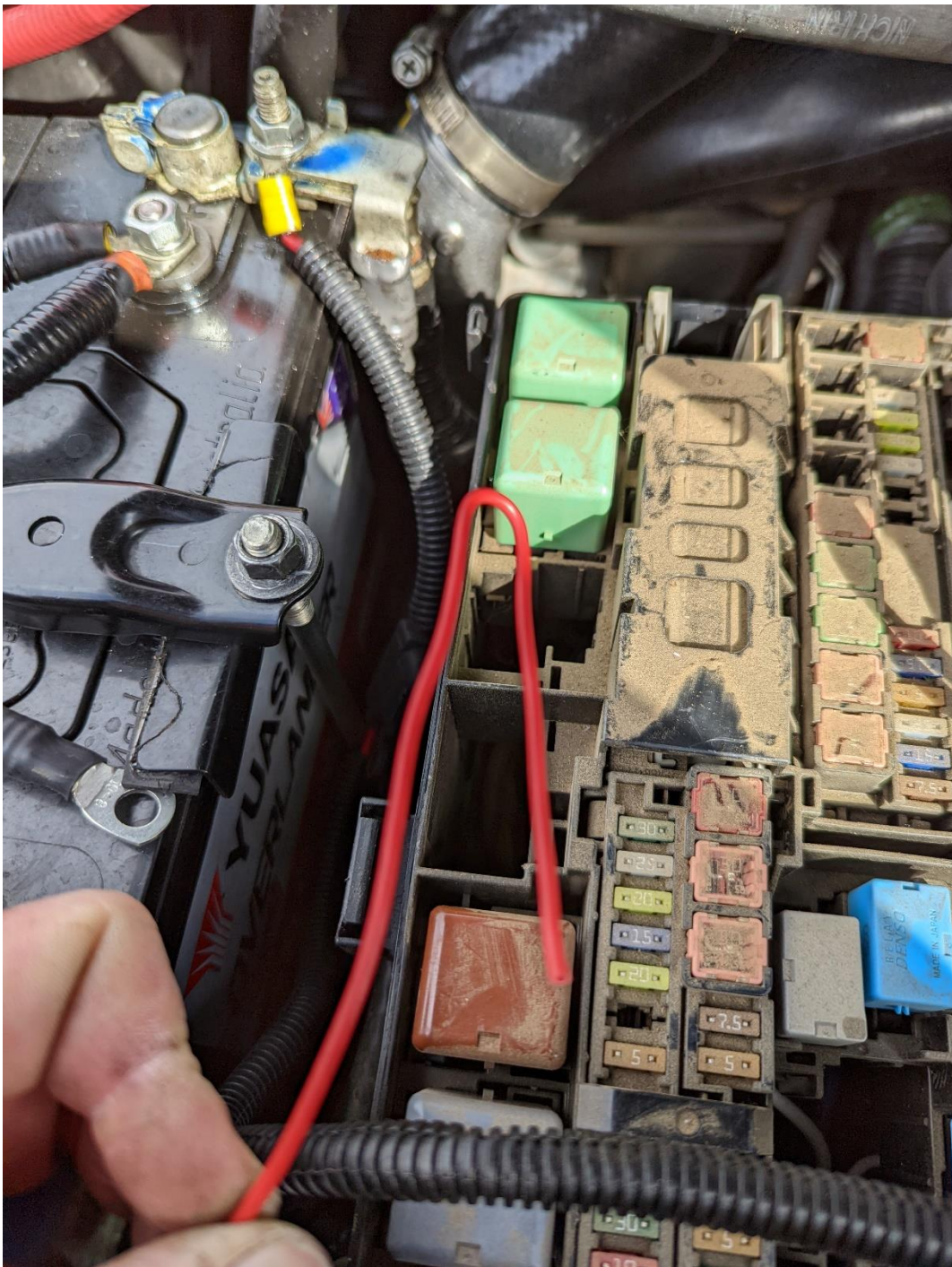


## PRE DPF Models

Peel some wire out of the split loom it's incased in.

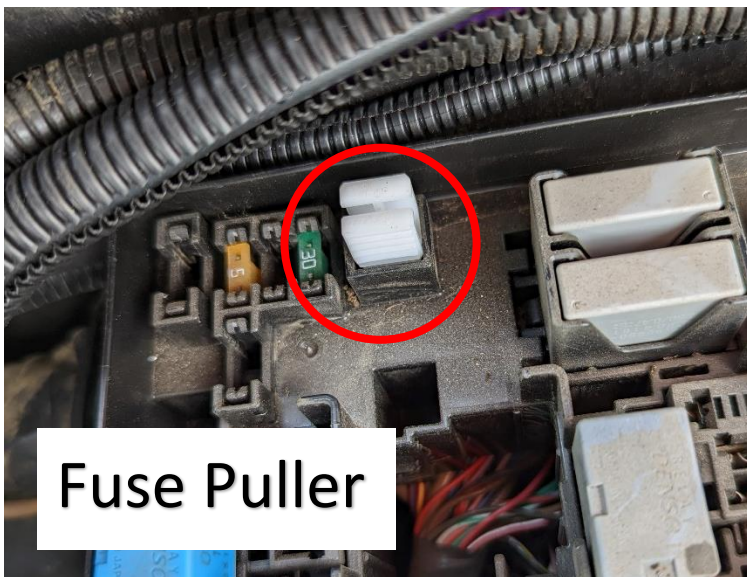
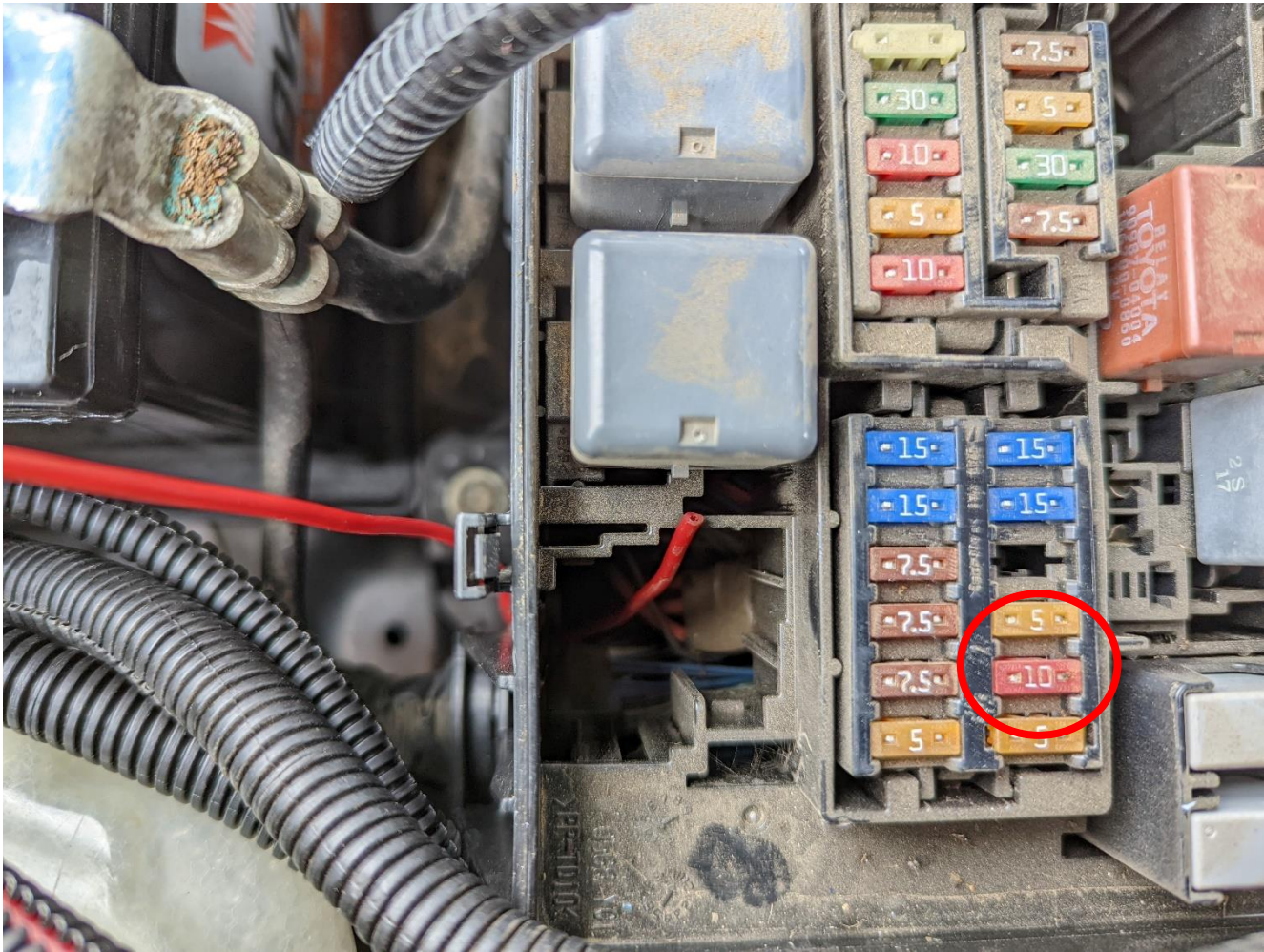
Bend a hook on the end and insert it into the hole where the vehicles wiring loom enters the fuse box.

The PRE DPF series wiring loom enters from the front side of the Fuse Box. There will be enough room beside the bundle of wires to fit the wire in.





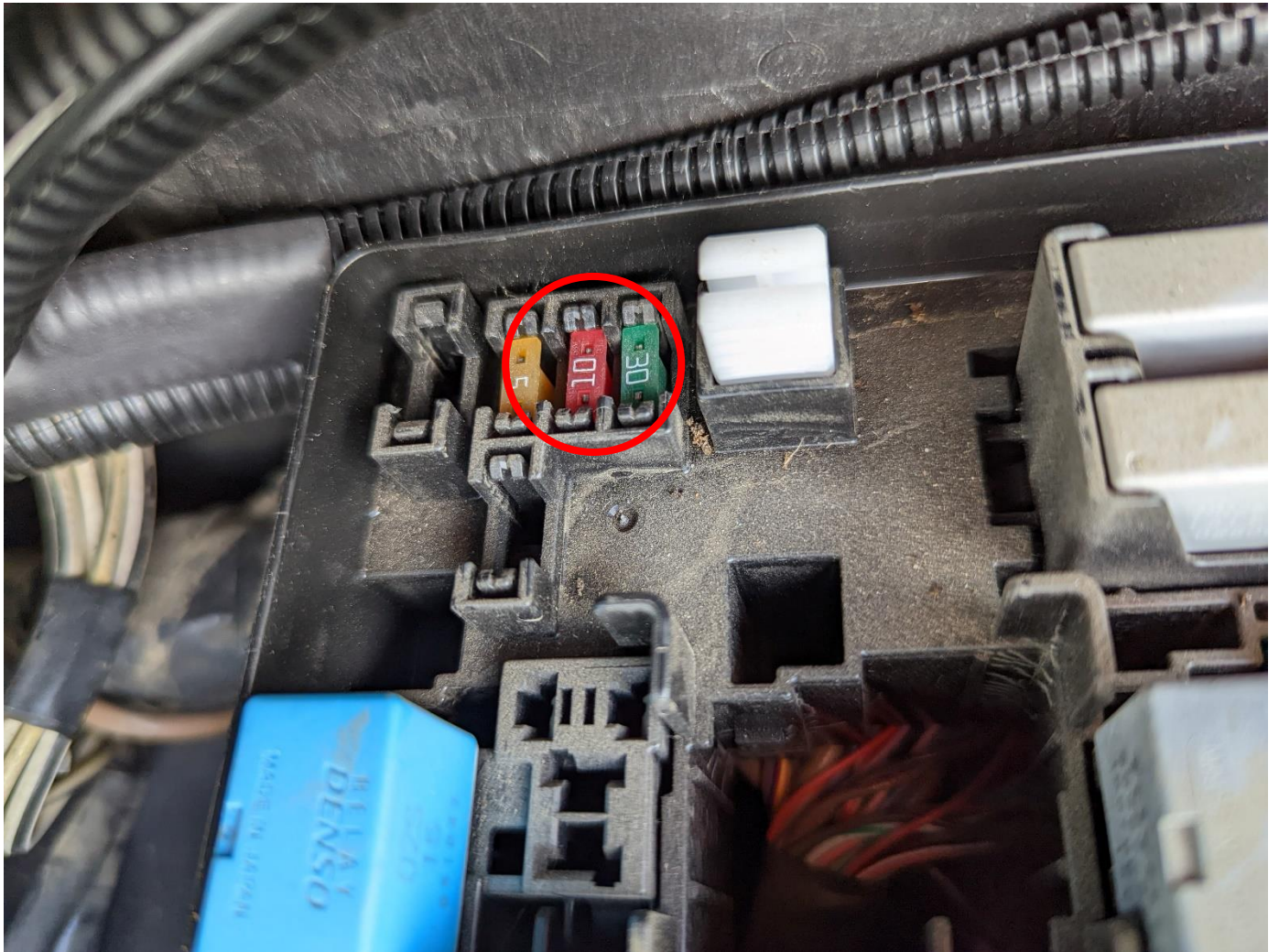
Locate the White fuse puller located on the passenger side of the fuse box. Remove the 10a Red fuse circles in **RED**







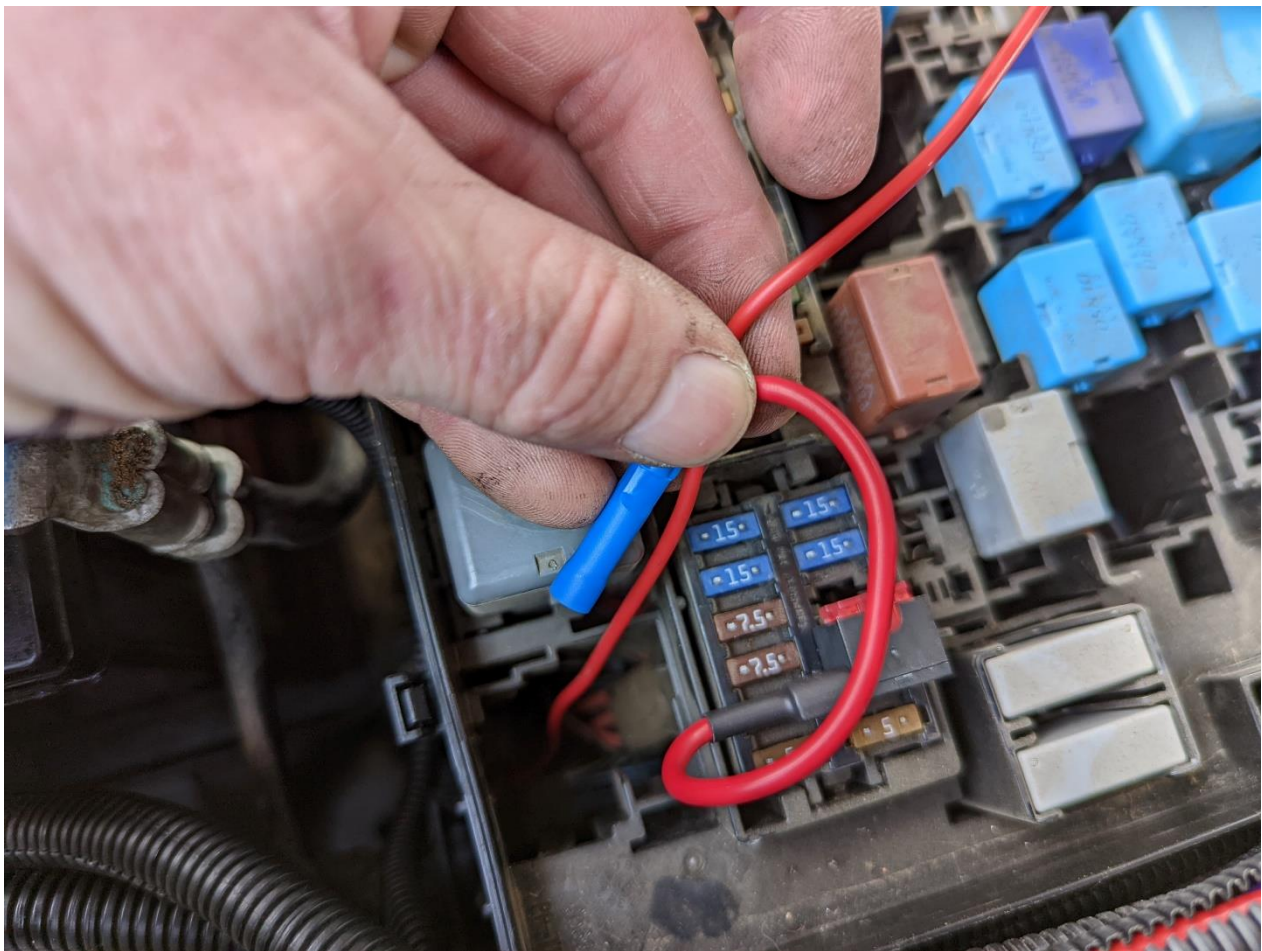
Return the Fuse Puller to it's location. You may have a spare slot in the unused section to place the 10a fuse you just removed. Pictured below.



Insert the Signal Wire Adaptor into the Ignition fuse circuit.

(2 new 10a fuses have been pre-installed into the Signal Wire Adaptor)

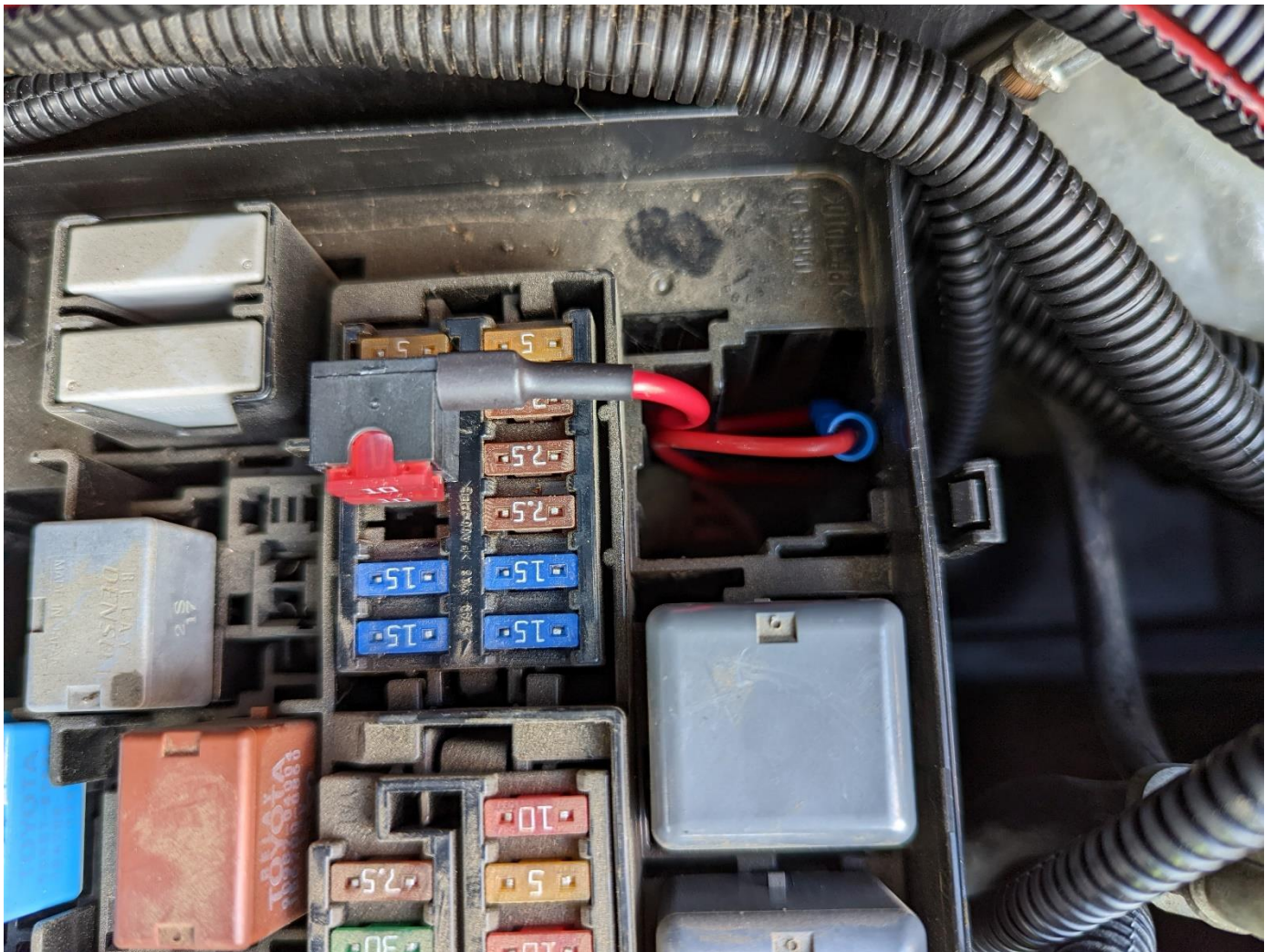
Pull all excess signal wire into the fuse box while removing unneeded split loom in the process. Leave enough signal wire coming out of the top of the fuse box to comfortably use your Wire Crimps when connecting the Signal Wire Adaptor.





Once desired length of signal wire has been determined cut & strip roughly 6mm of wire. Crimp the Signal Wire Adaptor to the wire.

Tuck the wire down into the cavity as pictured.





Replace Fuse Box Lid.

Connect the Positive & Negative wires to the battery.

Source some Cable Ties & safely secure the entire wiring harness in place around the engine bay where necessary.

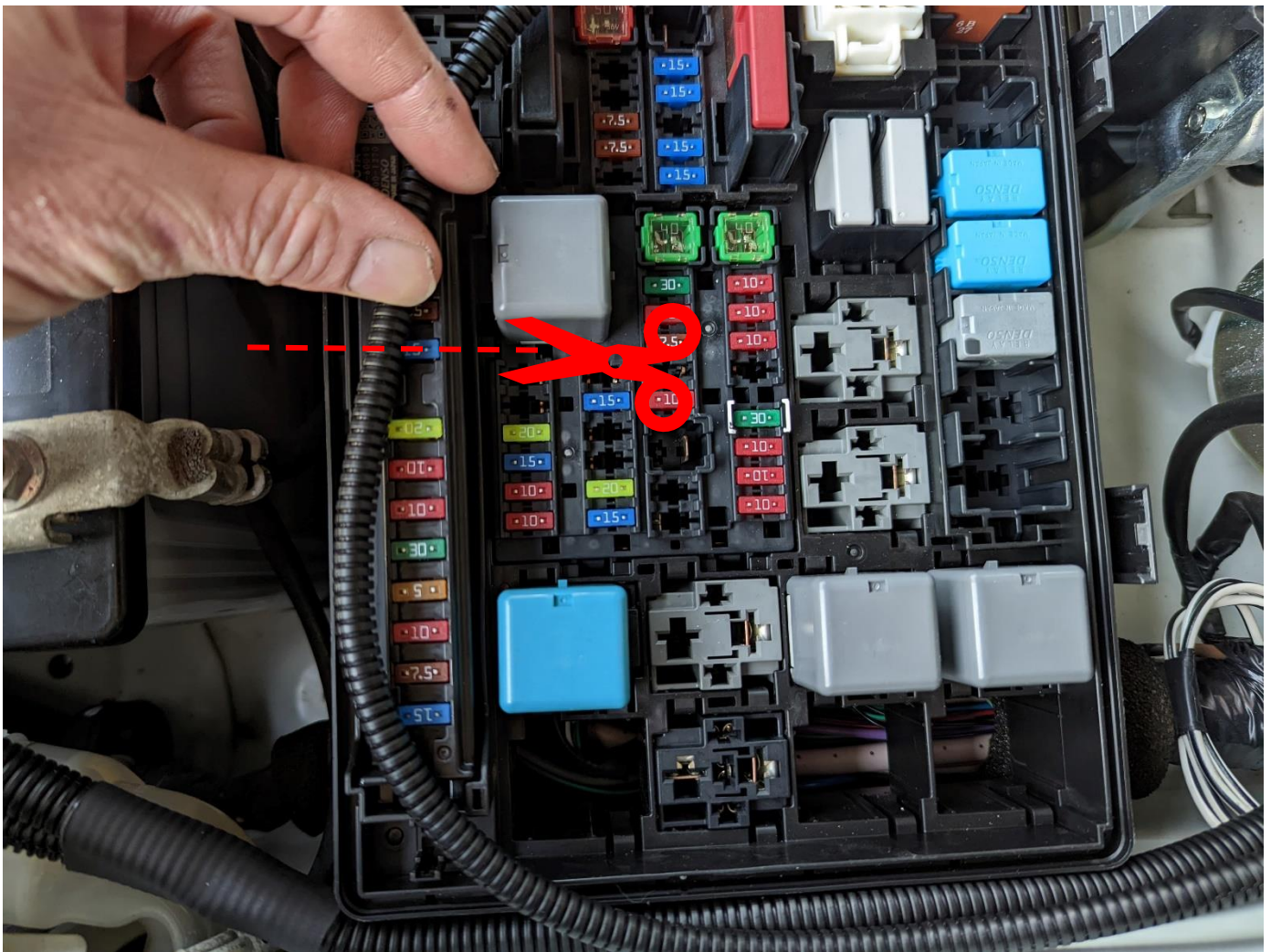




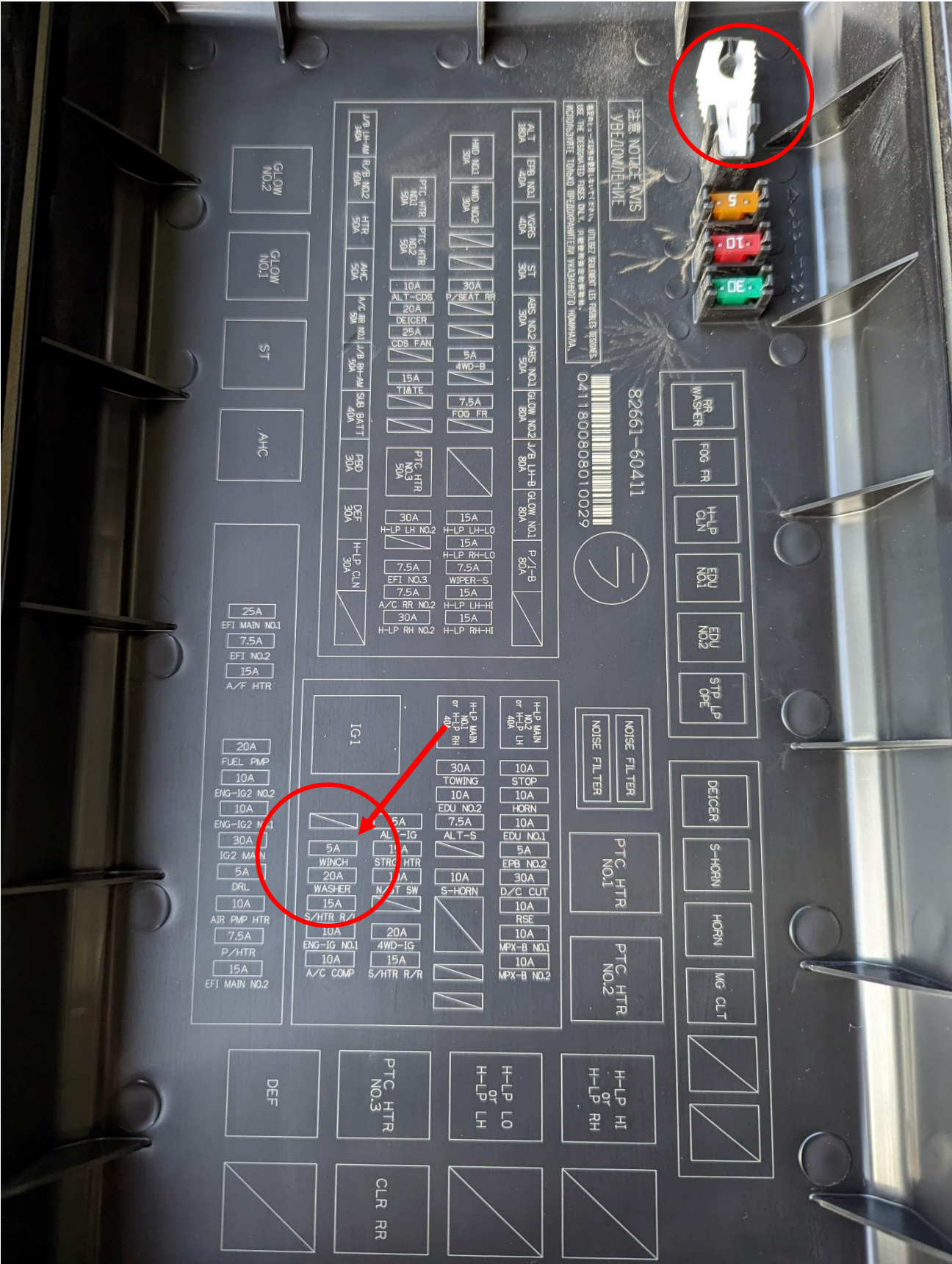
# DPF Model

Remove Fuse Box lid

Run the Signal Wire around to the Grey Relay. Note the position, cut wire and split loom there.

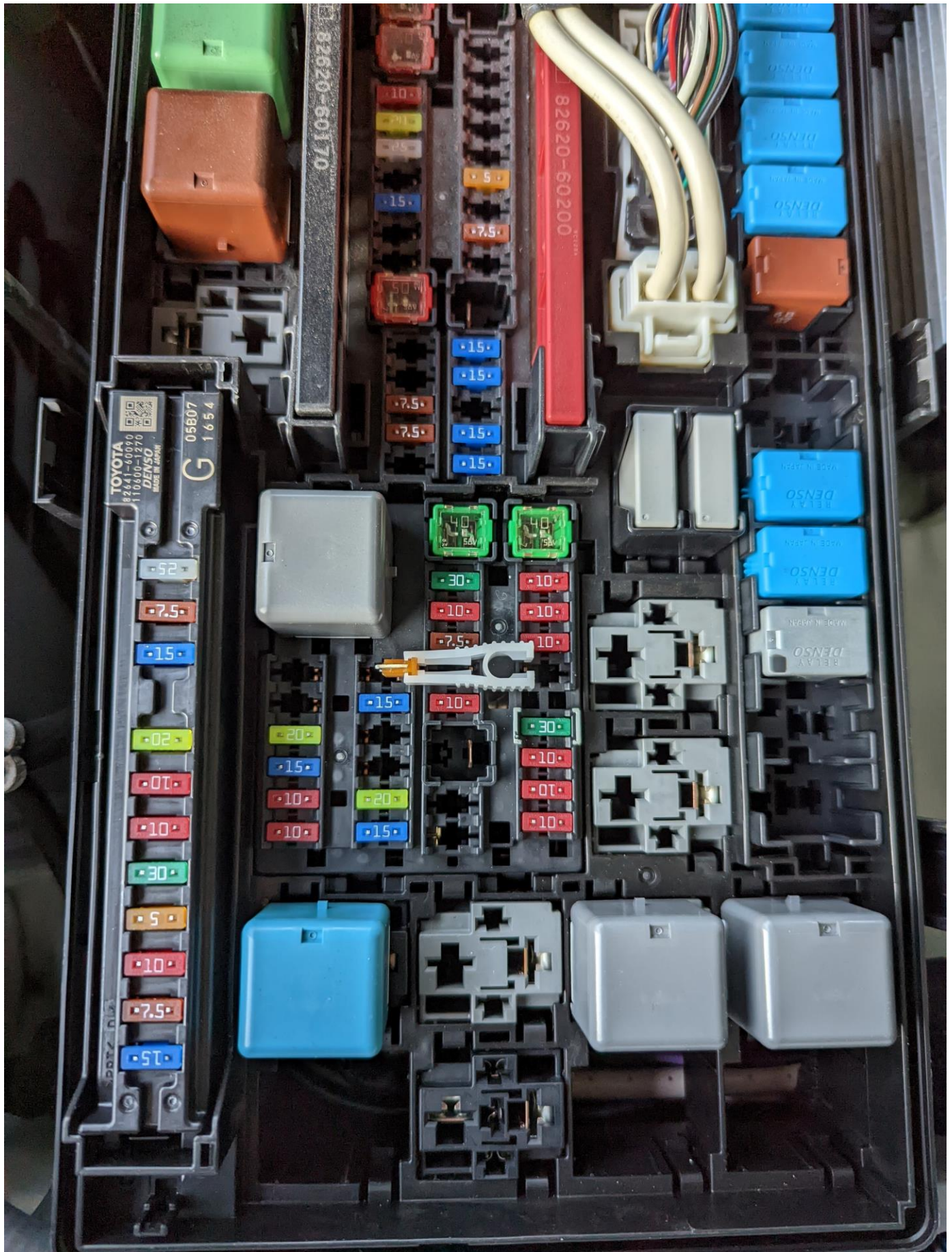


The Signal Wire Adaptor needs to be inserted into the Winch fuse point.



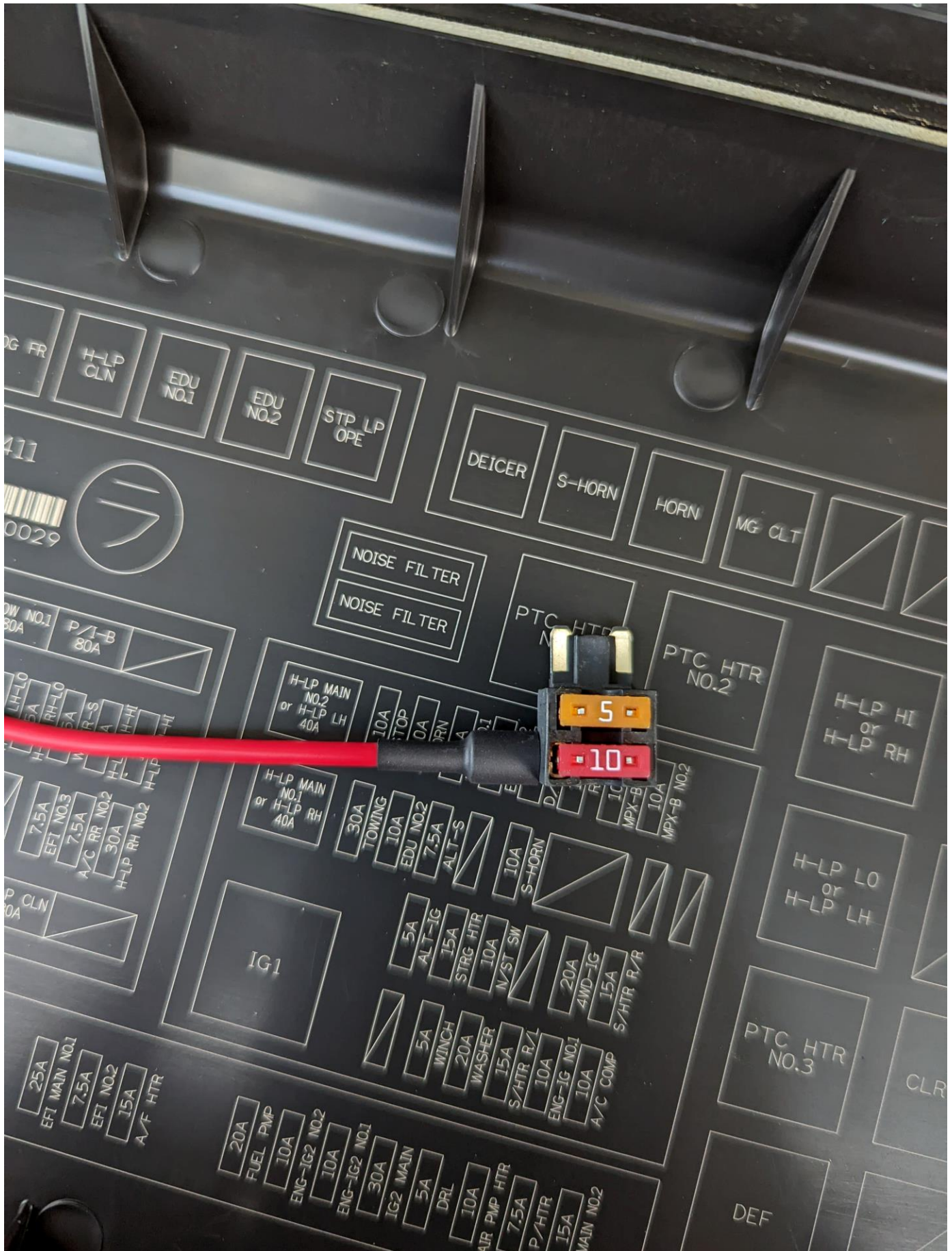


Remove the 5a Fuse.





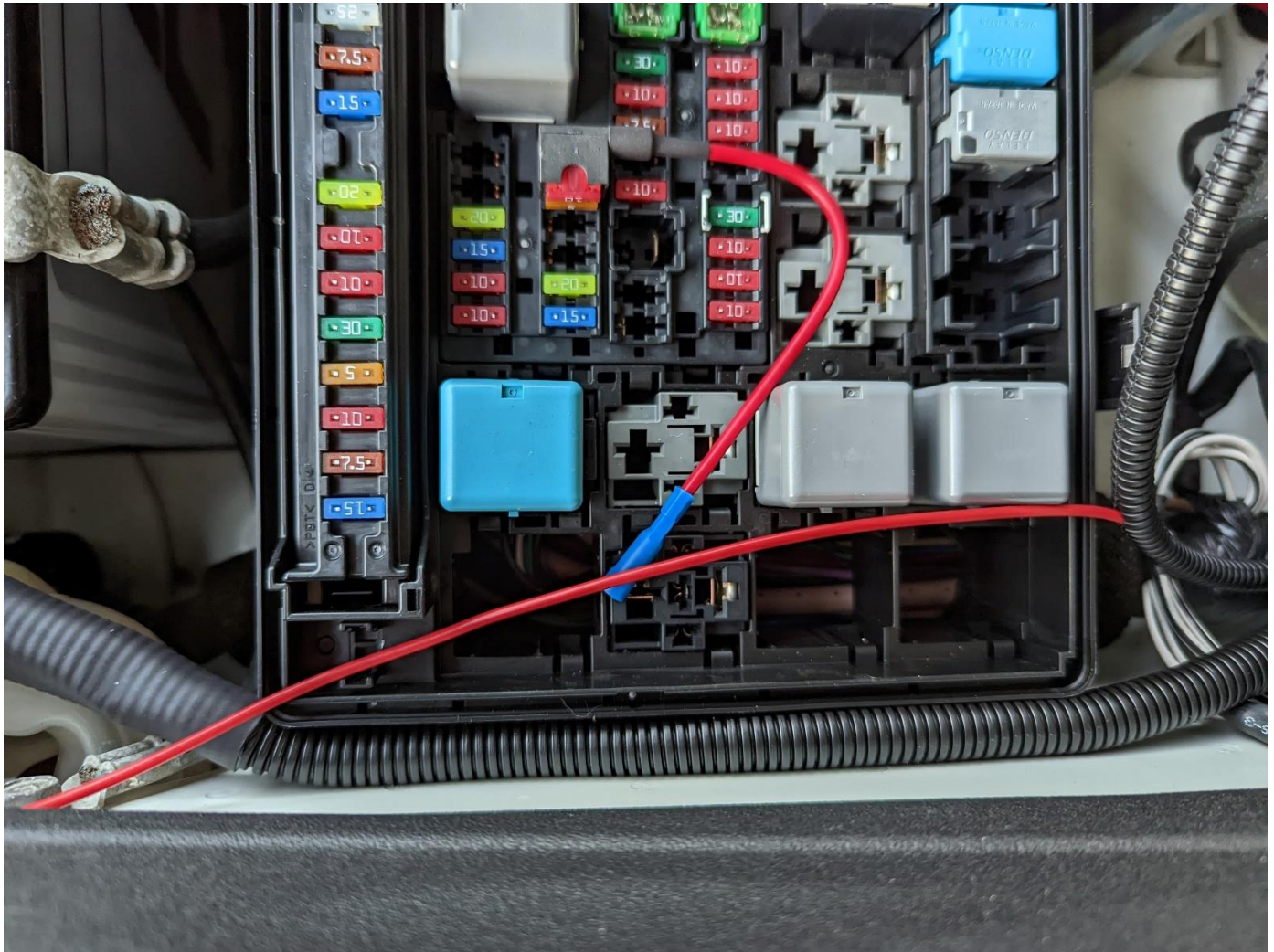
Remove one of the 10a Fuses & insert the 5a fuse in it's place as shown in the image below.





Insert the Signal Wire Adaptor into the Winch fuse position.

Strip Split loom back exposing the wire.



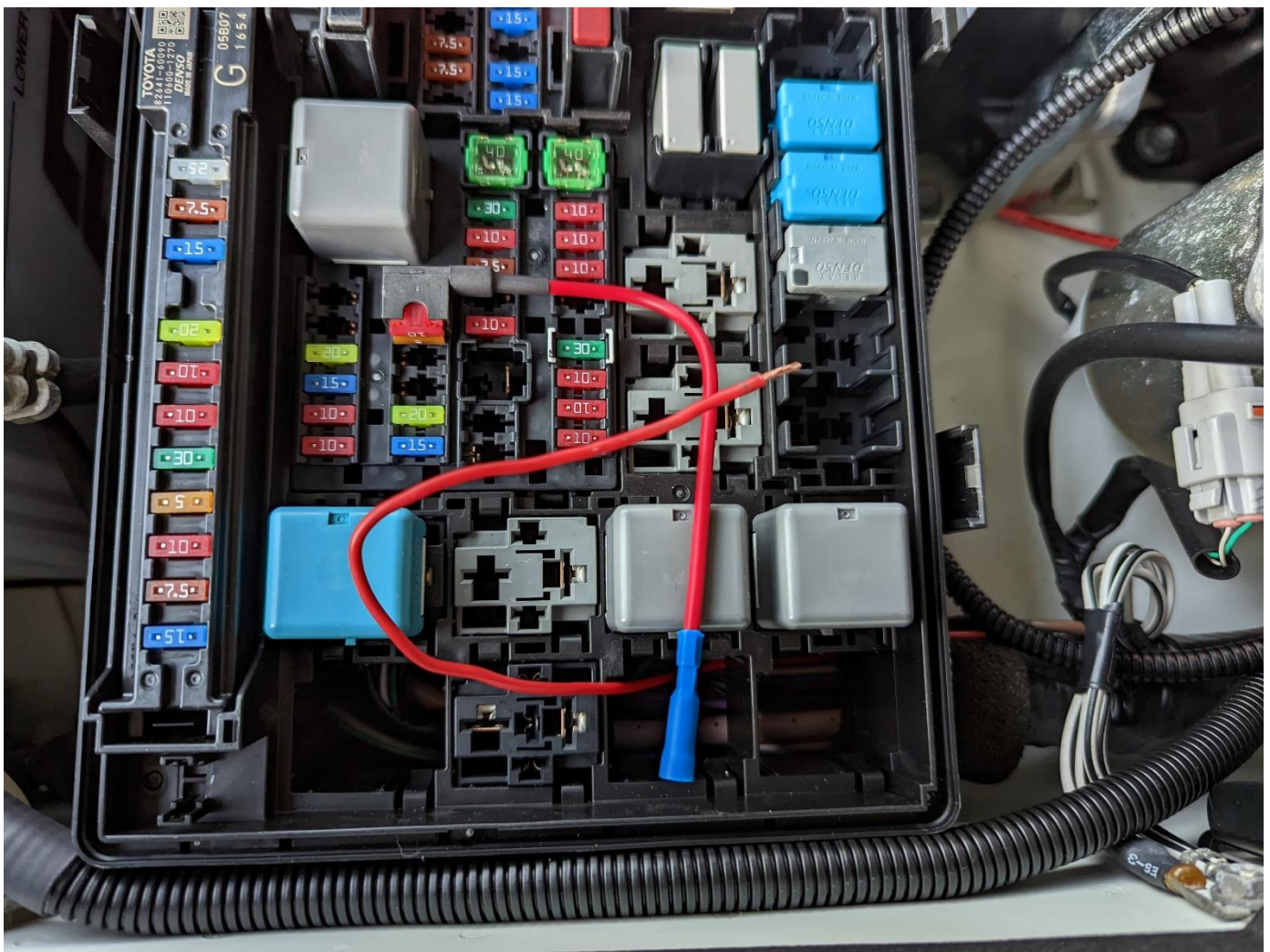
Insert the Signal Wire over the foam insulator & into the fuse box. Will take a little bit of a wiggle to get it through.



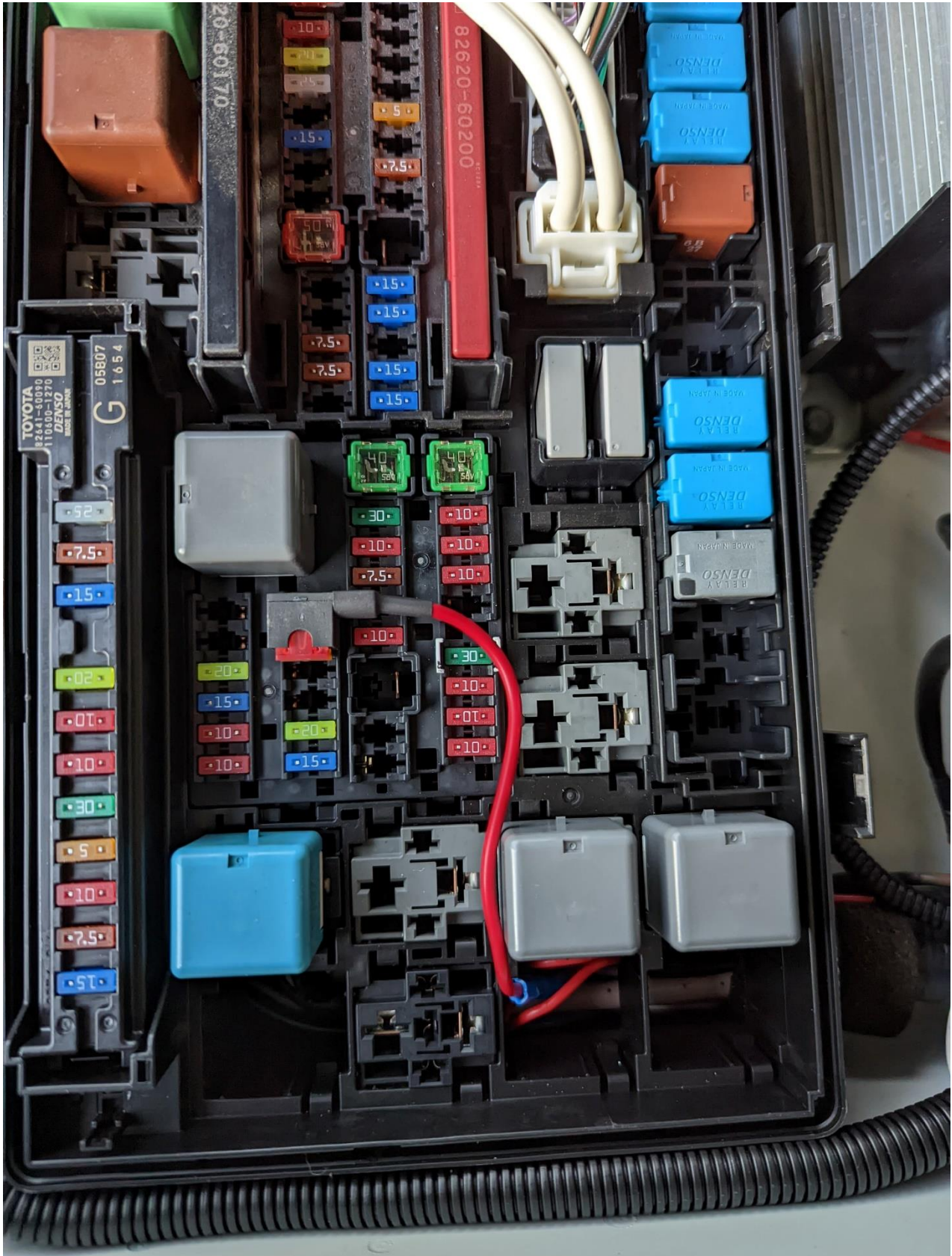


Pull the Signal Wire up & through the base of the Fuse Box.

Strip roughly 6mm off the end of the wire & crimp to the Signal Wire Adaptor.



Tuck excess wire down into the cavity.





Do a final inspection of the fitting of the wiring loom. Check that it's not running over any sharp edges in the process of fitting.

Installation is complete.

